

FEATURES

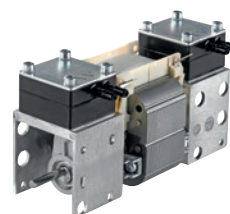
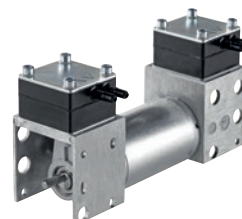
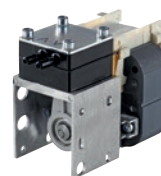
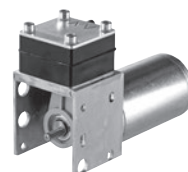
- > Oil-less
- > Low vibration
- > Low sound level

TYPICAL APPLICATIONS

- > Medical devices
- > Clinical analyzers
- > Air collector
- > Inhalators
- > Autoclaves

BASE MODEL

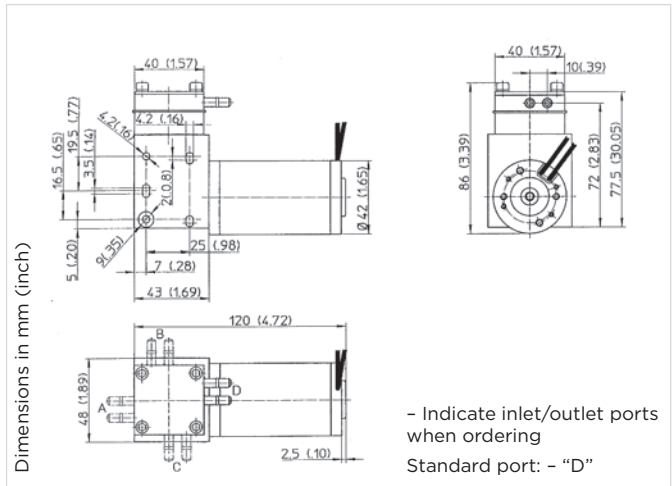
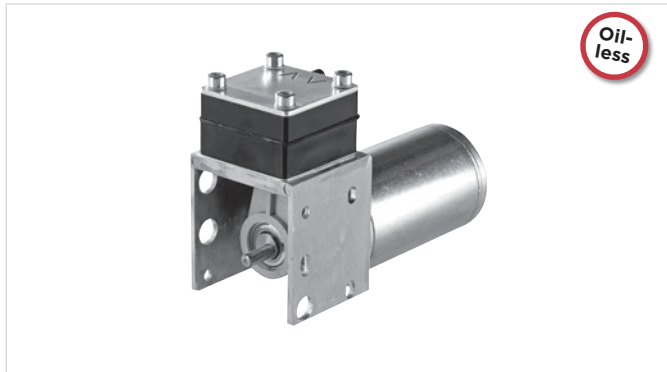
- 7010 DC
- 7010 AC
- 7010Z DC
- 7010Z AC



Diaphragm

Diaphragm Pump 7010 DC

Flow	6.5 l/min
Max. pressure	2.2 bar
Max. vacuum	73 %



PNEUMATIC DATA

Description	7010VD/2.2/NNN/DC	
Part number	12 V DC	70102502
	24 V DC	70102514
Max. flow	6.5 l/min	
Max. intermittent duty	2.2 bar	
Max. continuous pressure	1.0 bar	
Max. restart pressure	1.0 bar	
Max. vacuum	73 %	
Max. continuous vacuum	73 %	
Max. restart vacuum	73 %	

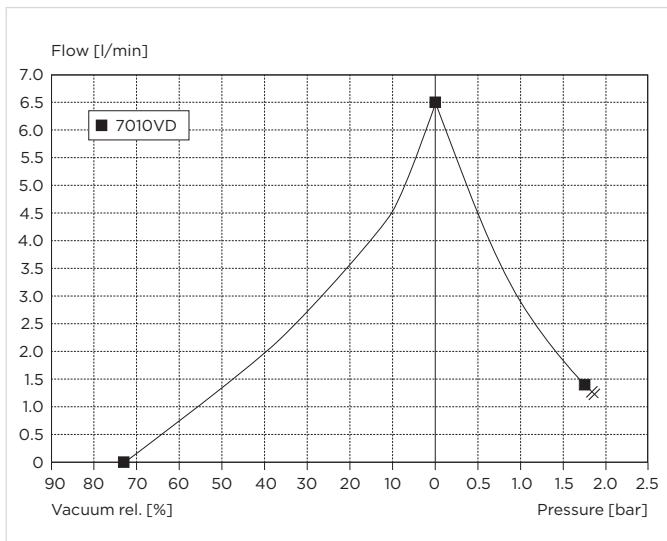
ELECTRICAL DATA

Motor type	Permanent magnet
Nominal voltage	12/24 V DC
Nominal speed	2800 rpm
Current consumption	1.3/0.65 A
Starting current	5.9/3.4 A
Power consumption	16 W
Motor insulation class	E
Protection class	IPOO

GENERAL DATA

Ambient temperature	15 to 40 °C
Media temperature	15 to 60 °C
Weight	0.6 kg
Port direction	D

FLOW CURVES



WETTED PARTS

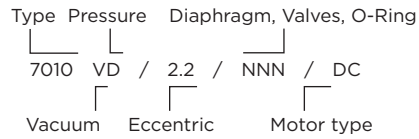
Pump chamber	PAA
Pump head	PA
Diaphragm	NBR
Valves	NBR
O-Ring	NBR
Diaphragm plate screw	Galvanized steel

OPTIONS

PPS
PPS
EPDM, FKM, PTFE (FKM, NBR)
EPDM, FKM
EPDM, FKM

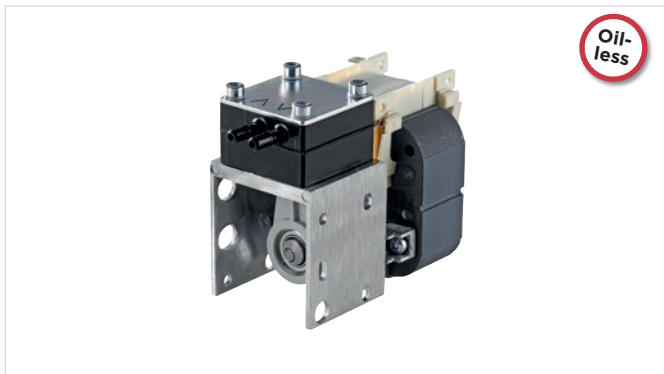
7010... Stock programme

Model key:



Diaphragm Pump 7010 AC

Flow	5.5 l/min
Max. pressure	2.3 bar
Max. vacuum	73%



PNEUMATIC DATA

Description	7010VD/2.2/FFF/AC
Part number	230 V/50 Hz 70102532
Max. flow	5.5 l/min
Max. intermittent duty	2.3 bar
Max. continuous pressure	1.2 bar
Max. restart pressure	Ambient pressure*
Max. vacuum	73%
Max. continuous vacuum	73%
Max. restart vacuum	Ambient pressure*

ELECTRICAL DATA

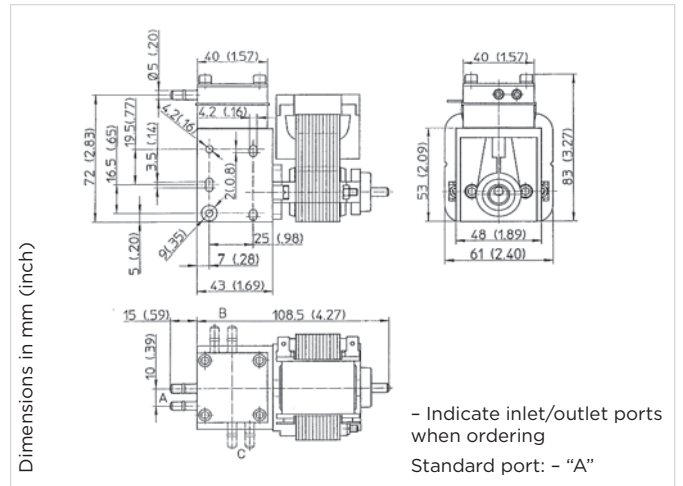
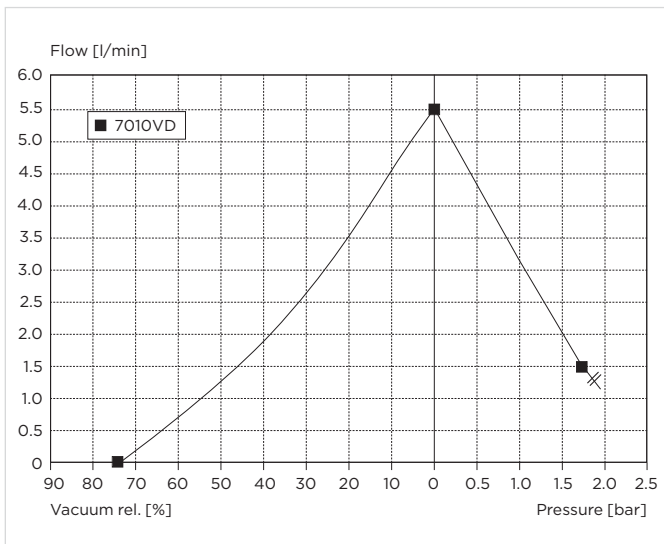
Motor type	Shaded pole
Nominal voltage	230 V/50 Hz
Nominal speed	2300 rpm
Current consumption	0.54 A
Starting current	0.62 A
Power consumption	52 W
Motor insulation class	E
Protection class	IPO0
Thermal switch	no

GENERAL DATA

Ambient temperature	15 to 40 °C
Media temperature	15 to 40 °C
Weight	0.95 kg
Port direction	A

* Part numbers change when restart is required with vacuum or pressure.

FLOW CURVES



WETTED PARTS

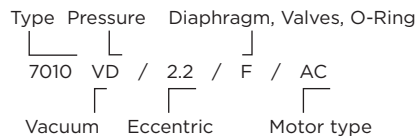
Pump chamber	PAA
Pump head	PA
Diaphragm	FKM
Valves	FKM
O-Ring	FKM
Diaphragm plate screw	Galvanized steel

OPTIONS

PPS
PPS
EPDM, NBR, PTFE (EPDM, FKM)
EPDM, NBR
EPDM, NBR

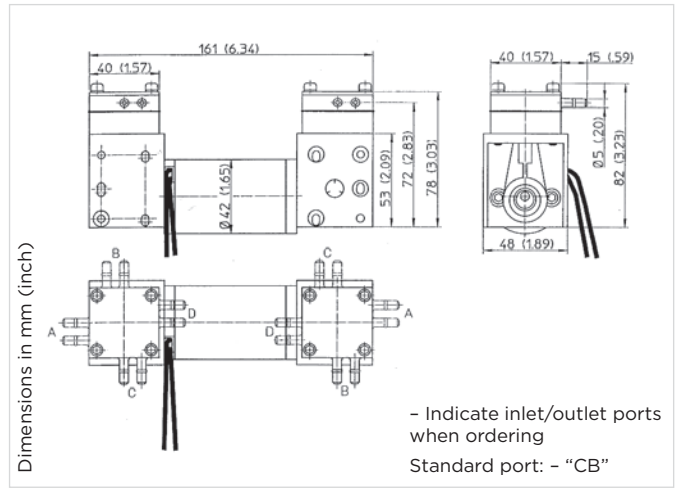
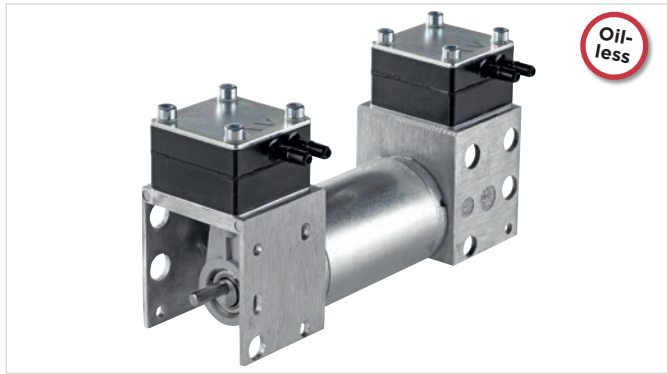
7010... Stock programme

Model key:



Diaphragm Pump 7010Z DC

Flow	12.0 l/min
Max. pressure	2.0 bar
Max. vacuum	90%



PNEUMATIC DATA

Description	7010ZVDP/2.2/NFN/DC	7010ZVR/2.2/NFN/DC
Part number	12 V 70102167 24 V 70102133	70100043
Max. flow	12.0 l/min	6.0 l/min
Max. intermittent duty	2.0 bar	
Max. continuous pressure	0.8 bar	
Max. vacuum	75%	90%
Max. continuous vacuum	75%	90%
Max. restart vacuum	Ambient pressure*	90%

ELECTRICAL DATA

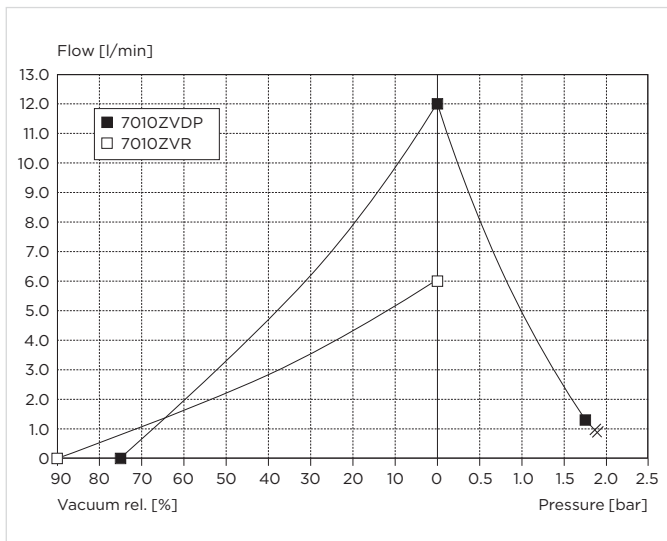
Motor type	Permanent magnet	Permanent magnet
Nominal voltage	12/24 V DC	12/24 V DC
Nominal speed	2800 rpm	2800 rpm
Current consumption	1.7/0.9 A	0.9 A
Starting current	4.5/3.5 A	3.5 A
Power consumption	20 W	20 W
Motor insulation class	E	E
Protection class	IPOO	IPOO

GENERAL DATA

Ambient temperature	15 to 40 °C	15 to 40 °C
Media temperature	15 to 60 °C	15 to 60 °C
Weight	0.75 kg	0.75 kg
Port direction	CB	CB
Configuration	Parallel	Parallel

* Part numbers change when restart is required with vacuum or pressure.

FLOW CURVES



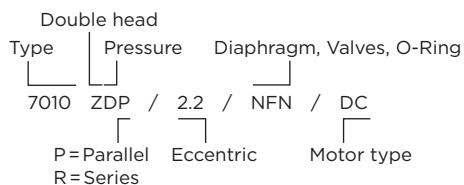
WETTED PARTS

Pump chamber	PAA
Pump head	PA
Diaphragm	NBR
Valves	NBR, FKM
O-Ring	NBR
Diaphragm plate screw	Galvanized steel

OPTIONS

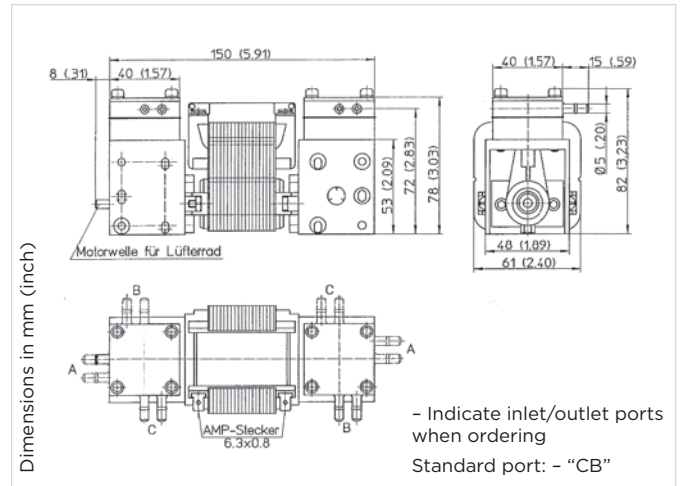
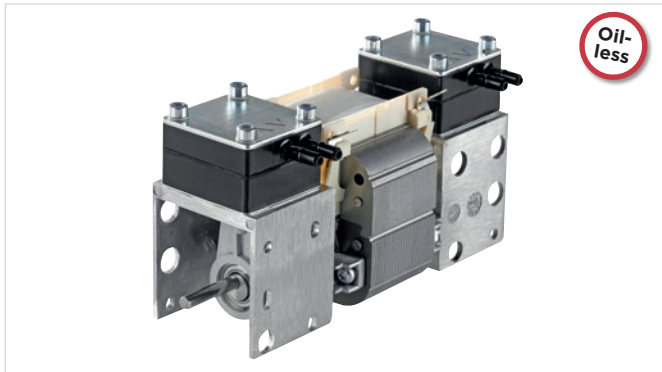
PPS
PPS
EPDM, FKM, PTFE (EPDM, FKM)
EPDM
EPDM, FKM

Model key:



Diaphragm Pump 7010Z AC

Flow	12.5 l/min
Max. pressure	2.3 bar
Max. vacuum	90 %



PNEUMATIC DATA

Description	7010ZVDP/2.2/NNN/AC	7010ZVDP/2.2/F/AC	7010ZVR/2.2/F/AC
Part number	115 V/60 Hz 230 V/50 Hz	70101813	70100196 70100448
Max. flow	12.5 l/min	10.4 l/min	5.3 l/min
Max. intermittent duty	2.0 bar	2.3 bar	
Max. continuous pressure	0.8 bar	0.8 bar	
Max. restart pressure	Ambient pressure*	Ambient pressure*	
Max. vacuum	75 %	75 %	90 %
Max. continuous vacuum	75 %	75 %	90 %
Max. restart vacuum	75 %	Ambient pressure*	90 %

ELECTRICAL DATA

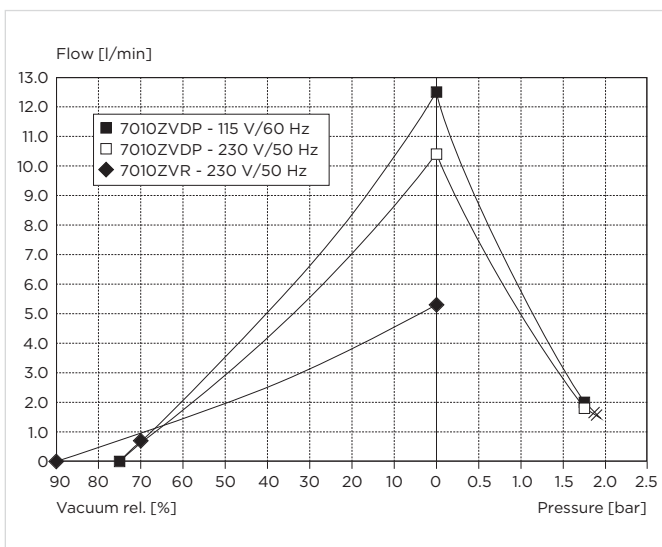
Motor type	Shaded pole	Shaded pole	Shaded pole
Nominal voltage	115 V/60 Hz	230 V/50 Hz	230 V/50 Hz
Nominal speed	2900 rpm	2300 rpm	2300 rpm
Current consumption	0.9 A	0.5 A	0.38 A
Starting current	1.1 A	0.6 A	0.6 A
Power consumption	67 W	60 W	60 W
Motor insulation class	B	B	B
Protection class	IP00	IP00	IP00
Thermal switch	130 °C	no	no

GENERAL DATA

Ambient temperature	15 to 40 °C	15 to 40 °C	15 to 40 °C
Media temperature	15 to 40 °C	15 to 40 °C	15 to 60 °C
Weight	1.45 kg	1.45 kg	1.45 kg
Port direction	CB	CB	CB
Configuration	Parallel	Parallel	Series

* Part numbers change when restart is required with vacuum or pressure.

FLOW CURVES



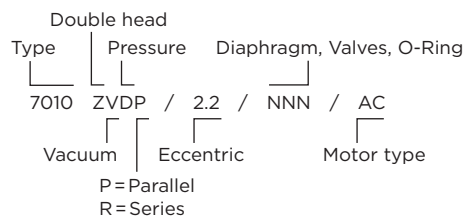
WETTED PARTS

Pump chamber	PAA
Pump head	PA
Diaphragm	NBR
Valves	NBR, FKM
O-Ring	NBR
Diaphragm plate screw	Galvanized steel

OPTIONS

PPS
PPS
EPDM, PTFE

Model key:



PUMP AND COMPRESSOR SOLUTIONS FOR OEMS WORLDWIDE

gd-thomas.com



Gardner Denver Thomas GmbH

Livry-Gargan-Str. 10
82256 Fürstenfeldbruck
Germany
T +49 8141 2280 0
F +49 8141 8892136
thomas.de@gardnerdenver.com

Gardner Denver Hong Kong, Limited

Unit 1317-1318 Delta House, 3 On Yiu Street
Siu Lek Yuen, Shatin, New Territories
Hong Kong
T +852 26903502
F +852 27924598
thomas.hk@gardnerdenver.com

Gardner Denver Thomas, Inc.

1419 Illinois Avenue
Sheboygan, WI 53081
USA
T +1 920 4574891
F +1 920 4514276
td.usa@gardnerdenver.com

THOMAS
by Gardner Denver

The information presented in this material is based on technical data and test results of nominal units. It is believed to be accurate and reliable and is offered as an aid to help in the selection of Thomas products. It is the responsibility of the user to determine the suitability of the product for the intended use and the user assumes all risk and liability in connection therewith. Thomas does not warrant, guarantee or assume any obligation or liability in connection with this information.

Models presented in this catalog are representative of the product family. Photos of products pictured in this catalog do not necessarily represent a specific model number. To obtain further information for custom options, contact your local Thomas office.

Printed in Germany Form No. 17007010 09/2016 © Gardner Denver Thomas GmbH. All rights reserved.